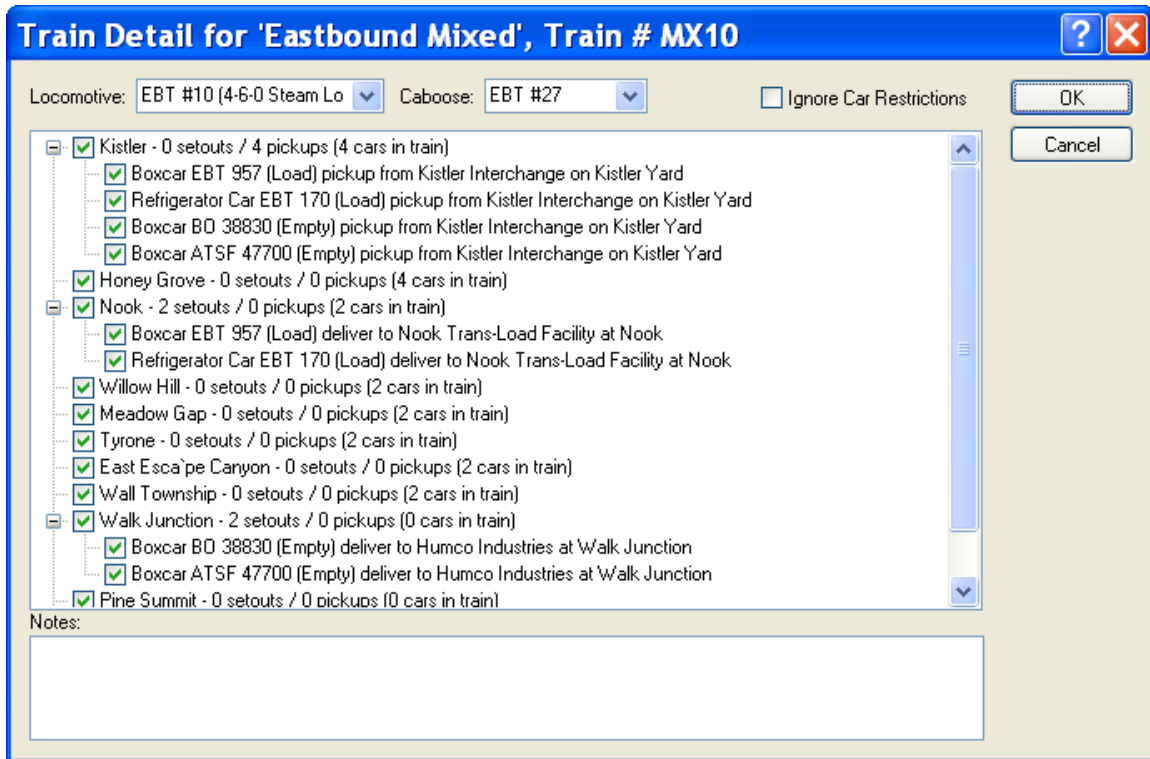
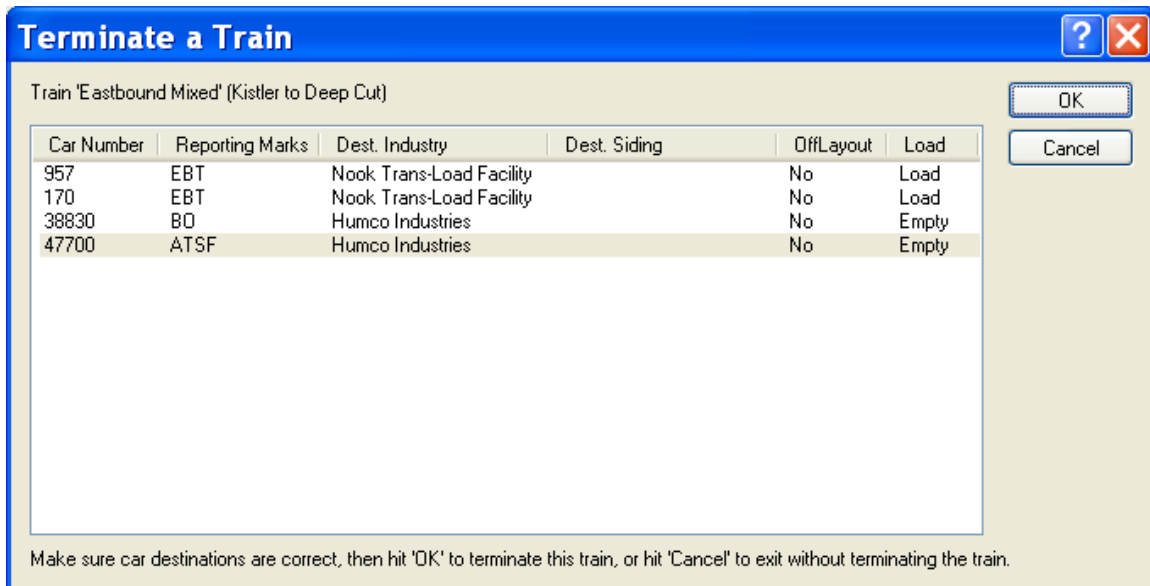


Build-a-Train V50 – MX10



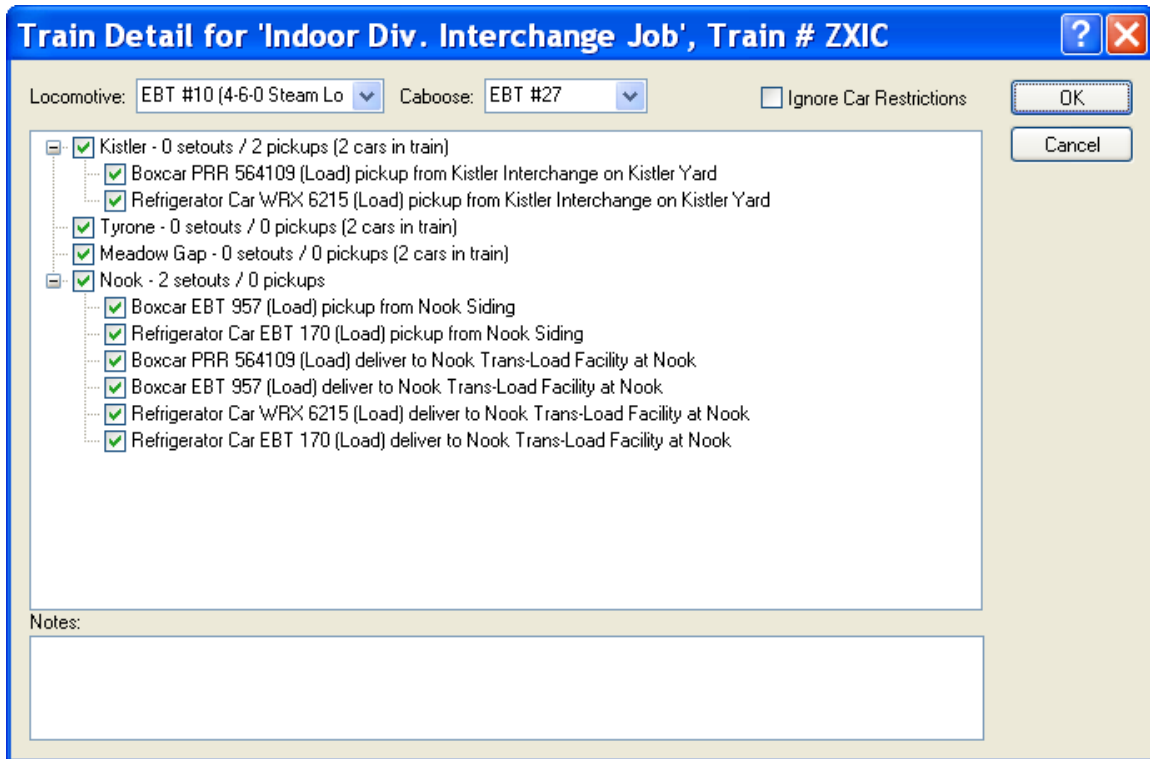
Terminate MX10



So far so good. Logical moves from off-layout to industries needing cars.

After Terminating MX10 the Equipment Location detail shows the cars at the industries as expected.

Now, we'll run the Indoor division job that only servers the Interchange and 1 industry



Note at NOOK, Boxcar EBT 957, which is already at the industry (Nook Trans-Load) according to the Equipment location above, gets picked up on the siding, and delivered to the Trans-Load again. Same for Reefer 170.